

Louvre Doorsets

Ventilated steel industrial doorsets available as single, double and bi-fold doorsets with overpanel and side panel options.

Applications

- Sub-stations
- Plant rooms
- Transformer chambers
- Oil stores
- Pump rooms
- Gas cylinder storage
- Refuse stores



Louvre Doorsets

Features

- Excellent airflow characteristics.
- Aesthetically pleasing.
- Complements Sunray Stackable Louvre system.
- Anti-vermin mesh or blanking to rear.
- Strong fully welded construction.
- Maintenance free lift off hinges.
- Wide range of locking options available.
- Single, double, leaf & half, 3-leaf and 4-leaf options available with side or overpanels.
- Choice of frame profiles demountable or fully welded (dependant on size).
- Non-fire rated.
- Architectural marine grade polyester powder coat finishes as standard.

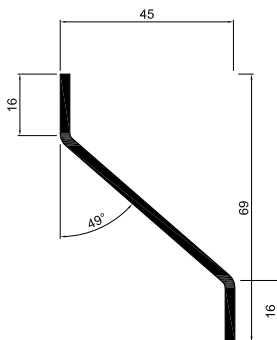
Sizes

Door-set sizes dependant on configuration and specifications.

Door Leaf

Louvre blades welded into a 50mm x 50mm x 5mm steel angle section framing.

Louvre blades formed to profile shown.



Standard blade thickness is 2.5mm.

Pitch is 50mm.

Door Frame

100 x 50 x 3mm rectangular hollow section to head and jambs with 100 x 10mm flat threshold.

Lugs or through frame fixing options available, (fixings supplied).

All welded/fully demountable construction.

Alternative frame profiles available.

Hinge parts welded to frame and door leaf.

Vision Panels

Range of square shaped vision panel designs.

Air Flow

Approximately 50%.

Fixing Method

Door frames second fixed within structural openings using M10 expansion anchors to masonry/concrete openings or M10 machine screws to drilled and tapped holes in steelwork. Frame to wall joints sealed with mastic sealant.

Hardware

Internal multi-point panic bar with Sunray 6000 with hasp & staple to the outside.

Mortice Locking.

Maglocks.

Various other locking features available.

Door closures.

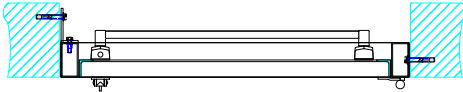
Door stays (holding doorset open to 90°).

Louvre Doorsets

Finishes

Top coat: Architectural marine grade polyester powder coat. 30% gloss level. 60-80 microns thickness. Optional marine grade zinc rich primer for enhanced corrosion resistance. 60-80 microns thickness. Stocked range of 58 standard colours. Other colours and finishes available on request.

Standard Frame Option



Sunray Doors
An Assa Abloy Group Company

Sunray Engineering Ltd
Kingsnorth Industrial Estate
Wotton Road, Ashford
Kent TN23 6LL

+44 (0)1233 639039
sales@sunraydoors.co.uk
www.sunraydoors.co.uk



Bespoke Design Services

Complementing our standard door ranges we also offer a complete, bespoke design service to suit specific client needs or to overcome site/building constraints.

Sunray Installation Service

We offer a full installation service covering our complete range of steel door and louvre systems. Work is carried out by our own qualified factory-skilled operatives and not sub-contractors.

Procedures are audited and our installation process is approved and certified by CHAS, Safe Contractor, Achilles Building Confidence and Achilles UVDB.

Sunray's Installation Service is certified by the LPCB/BRE to LPS 1271 for security and fire doors.

Nationwide Delivery Service

Specialist transport service includes curtain sider lorries with Moffett facility, flat bed lorries with HIAB facility and lightweight vans as applicable.



Louvre Doorset



Registered in England Registered No: 1480089 VAT No: 630851070